

e-newsletter

Affiliated to the New Zealand Federation of Business & Professional Women Inc.

October 2017

From the President.....

Hello

I hope October will be a great month for everyone. The weather so far I think is something we would like to forget but I just love Day Light Saving and the extra light in the evenings allows for more activities.

124 years ago, women were given the vote in New Zealand and of course we have just held our Elections again and as I write this report we are still waiting on the end results.

Thank you to our members who have filled in our Club survey we eagerly await the postal votes to arrive and once collated will send out the survey to members. We will discuss the issues arising from the survey at our November Executive meeting.

Thank you Anne for volunteering to help me with our Bursary Award again, but I would like another member to also come on board to help. It entails reading the received CV's ensuring that they are completed correctly and then do they meet BPW Franklins Award criteria. Also sitting on at the interview stage and deciding on the two winners. It will probably be over two days early February 2018.

This weekend I'm taking my two younger grandchildren to Orere Point for several days, looking forward to spending time with them and then the following weekend is our NZMCA Rally at Glenbrook Railway so hoping the weather will stay dry for two weekends in a row.



Looking forward to our next meeting, where there will be a panel of four Local Business Woman speaking.

Regards

Glenys

President BPW Franklin

In this Issue

| | Page |
|---|------|
| Presidents Message / Guest Speaker Info | 1 |
| Apologies / Venue / Birthdays / Programme/ Bursary Breakfast Fundraiser | 2 |
| Member Happenings / WEPs Awards / Issues | 3 |
| Attracting members / Hostess Notes / BPW NZ Raffle | 4 |
| NCW / Collecting items / Jen Birch / Don't forget | 5 |
| Minutes from September Meeting | 6 |
| Financial Report | 8 |
| Committee contact details | 9 |

Panel of Local Women

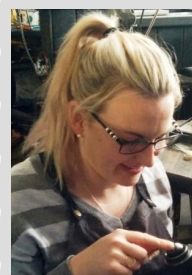
This months meeting is a panel of local women who will be speaking to us about the challenges and highs of their careers/running their own businesses. Panellists are:

Fiona Ritchie - After a corporate management, consulting and board career in Australia, Fiona returned to her NZ home where she established two businesses. First designing jewellery in NZ and manufacturing overseas, Aliexpress changed the consumer landscape and saturated the market with competitors. Deciding to teach herself a rare skill and make pieces that could not be replicated by mass production, Fiona opened her second leather business concentrating on a niche market. With 100% online sales, Fiona will talk about the challenges of the online market place and its hidden costs.



Lisa Kendall - Lisa runs a small agricultural support company called Nurture Farming Ltd, which provides all sorts of farm work to lifestyle blocks and land owners of all descriptions in South Auckland. Earlier this year Lisa won the Northern Regional Final of the FMG Young Farmer of the Year which qualified her for the Grand Final in July. Lisa came fourth overall and picked up some of the prizes for different categories.

Alice Rika - Hailing from Papakura, Alice was posted back into her home community as a fresh faced 20 year old. Since then Alice has worked in many different units/teams in varying communities throughout the wider Auckland Region. After spending 7 years away from Counties Manukau Alice has returned to the community she loves to raise her 2 children in. Alice continues to enjoy working as a Constable for the NZ Police.



Penny Harwood - Penny is a manufacturing jeweller, who hand-makes jewellery in a small workshop in the heart of Pukekohe. Originally from Blenheim, Penny has lived locally in Franklin for the last 12 years with her partner and dogs. She now owns the workshop, and along with a team of three other creative ladies, plans to continue making quality jewellery for the good people of Franklin for decades to come.

Members Happenings...

Congratulations to Virginia Warren on the birth of her great granddaughter Elysee earlier this month.

Many members have been busy travelling over the last few months with some off this month. We wish all members safe travels.

If any members have any news they would be happy to share in the newsletter, please email bpwfranklin@gmail.com.



Issues

Four key issues coming up for BPW Taskforce...

1. Pay Equity Equal Pay Bill (pending election outcome)

From our submission to the draft bill: "BPW NZ believe this legislation in its current form, would be counterproductive and harmful to women who are victims of pay discrimination"

Members: - Tell us about your experiences of gender pay or workplace discrimination?

- Tell us what pay equality means to you?

[Link to bill](#) [Link to BPW submission to draft bill](#)

2. Constitution

Our "Constitution" isn't a single document but many sources, pieces of legislation, legal documents and common law. A single, written Constitution will help us know how our government operates and who has what power. ConstitutionAotearoa.org.nz has drafted a Constitution and is seeking submissions.

Members: - Should we codify our Constitution?

- Feedback about the draft Constitution?

3. Climate change and the effect it has on our Māori people.

For the Climate Change summit happening in November in Paris.

4. Rural Women (This is the theme for CSW 62.)

Challenges and opportunities in achieving gender equality and the empowerment of rural women and girls.

Review theme: Participation in and access of women to the media, and information and communications technologies and their impact on and use as an instrument for the advancement and empowerment of women, from the 47th session of the CSW.

If anyone would like to assist with submissions please contact vpissues@bpwnz.org.nz or taskforceissues@gmail.com.

2017 WEPs Awards at Government House

Suffrage day (19th September) this year was very special for me as the UN Women's Empowerment Principles (WEPs) committee held a magnificent awards evening at Government House in Wellington. We were very fortunate to have Her Excellency, the Governor General, The Rt Hon Dame Patsy Reddy and His Excellency Sir David Gascoigne host the White Camellia Awards as we celebrated the work of organisations that are putting gender equality strategies into their workplace.

We try and hold the awards on or near suffrage day each year and have named the awards the White Camellia awards to honour the early suffragists. In 1893 the suffragists presented a white camellia flower to those members of the House of Representatives who voted in favour of women gaining the vote. We carry on the tradition of using the white camellia as a symbol of the empowerment of women. It was very special as Chair of the UN WEPs committee to welcome all the guests and to present a white camellia to our award winners.

It was a very emotional event and it sent shivers through my spine to be part of the large group (well over one hundred there) who stood and sung God Defend New Zealand as we united in our wish to make this country a better place for all.

Law firm Simpson Grierson took out the top award as their overall commitment to improving gender equality in their workplace put them head and shoulders above the rest. Alongside supreme winner Simpson Grierson, other categories were won by KPMG, Westpac, The Warehouse Group and Coca-Cola Amatil.

This year we also included a new award for small businesses and organisations, with the inaugural winner being the Far North Safer Community Council. This was a very special award for me as this organisation signed up to the WEPs because of the encouragement of BPW Kaitia and BPW Kaitia President Ciaran Torrington as Deputy Chair of the Council was there to accept the Award. A great moment to see the Governor General present their White Camellia Award!

BPW New Zealand can feel very proud of the part we play in encouraging organisations to build holistic workplace policies that empower women and for the ripple effect this is having through our communities.



Vicky Mee,
Immediate Past
President BPW NZ

CLOSE to my HEART®

Independent Consultant

tonihill.closetomyheart.co.nz

toni.closetomyheart@gmail.com

021 818 706

We show you how to celebrate relationships through discovering your creativity, to preserve & share the moments that matter most.

Are you proud of being a member of BPW ?

When I first joined BPW I was rather shy of speaking about BPW then I went to one of my first conferences and one of the members got up and spoke about all the things BPW did and the importance of recruiting new members all the time and that it was the responsibility of each and every one of us to be increasing membership and a good aim was to speak to at least one person every day.

I heard someone say they didn't want to bore their friends with BPW stuff, and I think early on that may have been one of my fears; however one quickly picks up looks of disinterest so one doesn't pursue the subject. However I seldom find this reaction because if you are enthusiastic it is infectious.

This week I was in the bank speaking to the customer service person about my accounts and as she was a fairly young looking woman I thought she might be a good candidate for the bursary award. So I started the conversation with "

Have you heard about BPW?" (I find that a good opening gambit!**) She hadn't. So I told her about the generous award we give to a Franklin resident each year for tertiary education. That opened up the opportunity to tell her more about BPW, the friendship, the issues we discuss, the professional development open to members etc, etc. by the end I gave her one of the BPW Franklin biz cards (these are available to members) with my email address and before I left she had sent me an email so I could give her more info and invite her to the dinner on 27th when I got home!

I then went on to a place at which I leave toiletries for the Women's Refuge and got another opportunity to invite one of the counsellors to the dinner as she had seen in the paper or on neighbourly, that the speaker was talking on Autism.

Of course, we have yet to see if these will translate into their coming to the dinner but nothing ventured, nothing gained! Also the knowledge that people have to see/hear things 5 times before

they act, demonstrates the importance of each of us speaking to someone every day!

Please, I implore you to speak to someone every day about BPW and the great work we do on behalf of all women. That way we will get more members and our membership will be vibrant and varied and the work load for the committee will be well spread out and we all benefit.

** Opening Gambit – if they say 'no' a short opening statement on bursary opportunities, our speakers (one you particularly liked) pay equality, KTAs, friendship (particularly if they are new to the area) etc. if they are interested offer to get more info to them. If the answer is 'yes'; do they know there is a club in Pukekohe? and you are off to a good start. Occasionally they will comment that they did not enjoy it enough and that presents a good opportunity to find out why, (so Franklin BPW can do better) or invite her to try our club to see if it is an improvement.

Virginia.

Communicare operates friendship centres for seniors and the disabled. Our Pukekohe Centre is at Plunket Building, Cnr Edinburg & Wesley Sts, Pukekohe. Mon 9.30am-12.30pm. Join us for some fun activities. \$6 includes refreshments.
More information: (09) 6315968.

NOTES FOR HOSTESSES

- * Please arrive early enough to set up the room for the evening and put on the table cloths.
- * If you are unable to be a hostess it is your responsibility to find a replacement however if you need help with this I am sure a committee member will assist you.
- * Hostess Badges are in the float box and are to be returned to the box at end of evening.
- * Make sure visitors are never left on their own – all members have a responsibility to speak to as many of the visitors and new members as possible at every meeting. Invite them to join you for the meal. It is so easy to feel isolated and excluded from what can appear to be an "in group". Make sure you make all people feel welcome and at ease.
- * Please make sure the Guests sign the Visitor's book.

A NOTE FOR ASSISTANT TREASURERS

Please take the table cloths home and launder them, bringing them back the following month. As this is a new initiative, if there are any issues, please see one of the committee so it can be discussed.



BPW New Zealand

All members are requested to sell 5 tickets (\$5 each) as a fundraiser to subsidise Conference costs to ensure a quality event that is accessible to our members.

Win one of 4 Kingsize Quilts (valued \$1,000).

Tickets will be passed onto members and money collected can be paid directly into BPW Franklin account to transfer to BPW NZ.



KineticElectrical®
smarter

Sue Beston
Managing Director

p: (09) 238 9591
m: 027 227 1436
e: sue.beston@kinetic-electric.co.nz

Best On Electrical Ltd
1/80 Adams Drive
Pukekohe 2120
New Zealand
www.kinetic-electric.co.nz

NEW BOARD

President is **Vanisa Dhiru**, two other continuing Board Members are **Terese Tunnicliffe** and **Jessica Venning-Bryan**. The three newly elected Board Members are **Ali Jones, Lisa Lawrence, Arna Metcalfe**. The Board will appoint a Vice President from the five Board Members and will appoint an Aspiring Board Member for the first year.



**National Council of Women
of New Zealand**
Te Kaunihera
Wahine O Aotearoa

NCW Papakura/Franklin is undertaking a fundraiser which BPW Franklin supported really well the last time it was done. Selling **Sileni wines**. BPW Franklin contributed a big percentage of the \$900+ and I hope they will do the same this time. Attached with this newsletter is an order form and list of wines/prices. **Orders with payment are required by 29 October**. Anyone interested can order online through Lisa Varga or pass onto Dianne Glenn at our dinner meeting on the 25th. Dianne will arrange for any orders to go to Lisa and then collect the wines from the home of a P/F NCW member and bring them back to BPW Franklin for collection.

Speaker: Jen Birch (BA) – Autism Spectrum Disorder

A very big thank you to Jen Birch, last months speaker and author of "Congratulations its Asperger Syndrome", New Zealand's first book on ASD from an insider perspective. Jen spoke inspiringly of her early struggles before her diagnosis in her 30's, and of ways to support people who have Autism and their families. Jen distributed an information sheet which contains the main points she covered in depth at the meeting. (Attached to this newsletter.)

Jen's mum took ill on the day of our last meeting and Jen has spent time with her giving moral support. Jen appreciated the flowers she received as they stayed at the hospital with her and returned with her mum so they could be appreciated more.

It was great to have guests attend our meeting to hear Jen. Some of the guests still face continued struggles today with children who are on the autism spectrum. From talking to them they appreciated BPW Franklin taking an interest and getting more information out there about some of the issues they have to deal with. We hope you enjoyed your evening and thank you for the insight you also provided us.

Table discussions included a lack of support, understanding and funding for parents who have children on the spectrum. Anne T recommended looking up Parent2parent.org.nz to a couple of the guests as an avenue that has assisted others she is aware of.



October meeting:

- Lucky Dip Items (for bursary breakfast)
- Bursary Breakfast ticket sales
- Towels/sheets/blankets/toiletries
- Lego
- Wine order
- BPW NZ Raffle (5 tickets \$5 each)



I saw this article in the FCNews today and the word Nepal caught my attention because of our close liaison with BPW Nepal.

I read that this young (well younger than me!) woman is **collecting lego** to take to children in a village where she plans to build a school (yeah literacy) and wondered how many grandmothers

etc. have grandchildren etc. who have grown out of their lego and still have it accumulating dust.

I am happy to be the conduit if people want to bring lego to the next dinner meeting (**along with sheets, blankets, towels and toiletries for the Whanau Resource Centre** in McNally Road), or they can drop lego into Lewis' for Fashion on King Street. There have also been some lego sales lately.



Dianne Glenn ONZM JP
Life Member - BPW Franklin



Thanks to all members and guest who filled out a survey at the last meeting or took the time to post it to us. The exec will be reviewing this data at our next meeting and will look to provide results to members soon after.

**"When you change
the way you
look at things,
the things you
look at change"**
Dr. Wayne Dyer.



Also on neighbourly.co.nz

www.bpwfranklin.org.nz

Like us on Facebook



GAIL LITTIN *Office Manager*
Master Cruise Consultant

89 King Street, PO Box 313 Pukekohe, 2340
Auckland South, New Zealand
T +64 9 237 1049 M 027 458 6648 F +64 9 238 3613
Email: gail@pukekohe-travel.co.nz
www.pukekohetravel.co.nz

