

## e-newsletter

Affiliated to the New Zealand Federation of Business & Professional Women Inc.

April 2017

### From the President.....

Hello

Well home now and I'm busy reading through minutes of previous meetings held this year, thank you all for attending to business without me and keeping us all informed through Facebook and our Web page.



John and I have had the most enjoyable time in the South Island (won't mention the ghastly summer we have had) the scenery has been spectacular and so different everywhere we went and the last few days before traveling to Picton to cross the strait was spent on a large farm just out of Havelock, what a beautiful property, so quiet and peaceful. We have met some wonderful people who will remain friends I'm sure from the two NZMCA rallies we attended and other travellers.

Once again in April we acknowledge our war Hero's on Anzac Day and the ones who lost their lives fighting for this country. Please wear your poppies in remembrance of these men and woman at our April dinner meeting.

Look forward to seeing you all again and catching up on news and wellbeing of our members this month.

Regards Glenys

**Website**

[www.bpwfranklin.org.nz](http://www.bpwfranklin.org.nz)

Like us on Facebook

[www.facebook.com/bpwfranklinnz](https://www.facebook.com/bpwfranklinnz)



#### *In this Issue*

	<i>Page</i>
Presidents Message / Guest Speaker Information	1
Apologies / Venue / Birthdays / Programme	2
Simonne Butler, Double-Edge Sword	
Members Happenings / Conference Raffles	3
Women's Refuge / Notes for Hostesses, Asst Treasurers	
Photos from last meeting	4
Minutes from March Meeting	5
Financial Report	7
Committee contact details	8

### Dr Angela Mackie



Academic interests in Art History and Italian led Dr Angela Mackie to academic posts in Wollongong, Adelaide and Melbourne where she completed her PhD while the Director of the Trinity College Foundation. Angela set up a lecture

series on her own account in the Undercroft of Holy Trinity Cathedral 15 years ago specialising in Art History and Italian Language and Literature. Angela now lectures there one day per week, to give her more time to pursue her lifelong passion in horses.

For the past 15 years Angela has been breeding thoroughbreds and warmbloods and is beginning a return to competing at a low level in the eventing scene. Dressage will enable Angela to combine her interests in "fine-riding", music and movement.

Choral singing has always been a part of Angela's life, travelling the world with the Auckland University Festival Choir and the New Zealand Choir which included a concert at Westminster Abby and being received by the First Lady, Mrs Nixon at the White House and the Secretary General at the United Nations. Angela has sung with the Cathedral Choir in Auckland, the Bach Choir in London and at St Mark's, Florence

Angela lives in the country in a lovely 100 year old villa surrounded by her art books, music, dogs and horses! Rural life is balm to her soul.

**ANZAC:**

We remember you

**We honour you**

We **thank** you

We will never forget **you**



## Apologies

### Please note changes below:

Members if you are unable to attend this month's dinner, please phone an apology through to:

**Marilyn Bennett**

**(09) 236 0636 Res**  
**or leave a message**  
**(027) 479 9121 Mobile**  
**(text preferred)**

**Email: marilynbenett35@gmail.com**

**Before 8.00pm**  
**on Sunday 23rd April**

If you have any special dietary needs, please notify Marilyn

- **If you are bringing guests, please let Marilyn know.**
- **An account for dinner will be sent for late apologies.**
- **Waiving of this charge will be at the discretion of the committee.**

## April Birthdays



### Draft Programme 2017

- April 26th: Art From War – Dr Angela Mackie  
Delegates report back from Conference
- May 24th: Katherine du Luc Pukekohe Hospital site development
- June 28th: *A suitcase of Saris*  
(Candlelighting Ceremony)
- July 26th: Neelam O'Neill Paralympian shooter  
(Mother/Daughter evening)
- August 23rd: Candidates Panel (Election Sept 23)
- Sept 27th: Jen Birch Autism Spectrum Disorder
- Oct 25th: Sir Rob Fenwick, Predator Free NZ

**26th APRIL 2017**

### Franklin Club

7 East Street, Pukekohe

Mix 'n mingle at 6.30pm, start 7.00pm

**COST: \$30.00**

To honour our Anzacs, please wear any medals you have. Remember, your own medals are worn on the left, those awarded to others are worn on the right.

**HOSTESSES: Nicky T & Marilyn B**

(Hostesses set up room please.)

**INTRODUCER: Annette S**

**THANKER: Raewyn F**

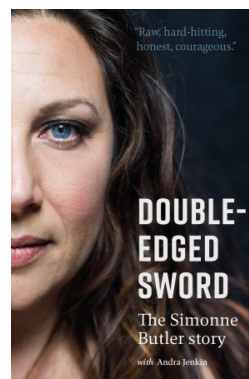
**ASSIST. TREASURER: Olive M-C**

(AT to take tablecloths home to launder please.)

**COLLECT READER: Sharon W**

If you are unable to undertake your role, it is your responsibility to find a replacement. However, if you need help finding a replacement a committee member will assist you.

At last months meeting attendees had the pleasure of hearing from the remarkably strong, courageous women, Simonne Butler. Guests were in awe of what Simonne has achieved, how she has healed and the strength she has to tell her story as a survivor spokesperson for The NZ Women's Refuge.



Simonne's book "Double-Edged Sword" was available for purchase. The book is inspiring, moving, enlightening, candid and brutal. For anyone who missed out, copies are available on Simonne's website [simonnebutler.co.nz](http://simonnebutler.co.nz)



**DESIGNER  
FLOWERS**

38 KING STREET, PUKEKOHE, NZ  
 PH/FAX: (09) 238 2235  
 EMAIL: [designerflowers@xtra.co.nz](mailto:designerflowers@xtra.co.nz)  
[www.designerflowers.co.nz](http://www.designerflowers.co.nz)



## Members Happenings...

**Trudi Harrison** is ready for some road trips now that her motor home is all set up and ready to go. This has been many months in the making getting it right, now just looking for some nicer weather conditions to hit the road.

**Toni Hill, Virginia Warren, Lee Walter and Janice Gammon** will be taking a road trip to Central Hawkes Bay for BPW Conference. They are looking forward to a fun weekend, meeting lots of new people and seeing some friendly faces.



The same weekend **Wendy Dunn** has a special evening with her daughter when her daughter hands back her pageantry crown for the next recipient. It will be a big weekend for Wendy as she also competes in a country music singing competition. We wish Wendy all the best for a successful weekend.

Condolences to **Jasvere Singh-Padda** on the passing of her mother.

Congratulations to **Virginia Warren** who announced she is going to become a great grandmother.

**Gail Littin** has returned from a wedding in Perth to be busy organising a BPW weekend trip away to Chateau Tongariro on the train. Check out the information attached with this newsletter.



**Raffle!**

### BPW NZ Conference Raffles.

The prize for the Nepal raffle is a one week stay at a Bach in Whangamata on the Coromandel. All money raised from that raffle will be sent to BPW Nepal and added to the funds they are using to rebuild homes in earthquake affected areas. A great cause and a great prize!

For those not attending, this is a great way to provide support for these key events, and there are great prizes on offer! Raffles have previously been won by club members who were not at conference so you can be sure you will be included in the draw.

Cost of raffle tickets: General Raffles \$10 for 5 draws; BPW Nepal Raffle \$5 for 1 draw.

Please contact : [secretary@bpwnz.org.nz](mailto:secretary@bpwnz.org.nz) with:

Account details for Cheque or Internet Banking - CHB Business & Professional Women's Club T/A Conference account 03 0779 0112750 03

Reference: 'Raffle Franklin'.

Closing date for pre sales is

19 April 2017



### NOTES FOR HOSTESSES

- \* Please arrive early enough to set up the room for the evening and put on the table cloths.
- \* If you are unable to be a hostess it is your responsibility to find a replacement however if you need help with this I am sure a committee member will assist you.
- \* Hostess Badges are in the float box and are to be returned to the box at end of evening.
- \* Make sure visitors are never left on their own – all members have a responsibility to speak to as many of the visitors and new members as possible at every meeting. Invite them to join you for the meal. It is so easy to feel isolated and excluded from what can appear to be an "in group". Make sure you make all people feel welcome and at ease.
- \* Please make sure the Guests sign the Visitor's book.

### A NOTE FOR ASSISTANT TREASURERS

Please take the table cloths home and launder them., bringing them back the following month. As this is a new initiative, if there are any issues, please see one of the committee so it can be discussed.



**WOMEN'S REFUGE**

Need help now? If your situation is urgent, call Women's Refuge Crisisline on 0800 REFUGE or 0800 733 843 or 111.

If you are in an abusive relationship, staying quiet gives them more power. Please talk to someone and share what is happening. If you don't get the right response first time, please try again.

People who have survived violence have learned many ways of coping in order to keep themselves alive. When a victim of abuse overcomes all the obstacles to leave a violent situation, celebrate their strength and courage!



**Franklin Law**

**Kelly Jones LLB**  
Director

Level 2, 1 Wesley Street, Pukekohe. PO Box 43 Pukekohe 2340.  
Phone: 09-237-0226 DD: 09-237-0294 Fax: 09-238-7141  
Email: [kellyj@franklinlaw.co.nz](mailto:kellyj@franklinlaw.co.nz) Website: [www.franklinlaw.co.nz](http://www.franklinlaw.co.nz)

**PREVIEW**  
W O M A N S W E A R



Like us on  
Facebook

Follow us on  
Instagram

Fashion solutions for your personal style

156 King Street, Pukekohe • Telephone: 09 238 9345  
Shop 9, Royal Oak Mall • Telephone: 09 625 5456  
P.O. Box 391, Pukekohe • Fax: 09 238 5336  
[www.preview.co.nz](http://www.preview.co.nz) • [info@preview.co.nz](mailto:info@preview.co.nz)

## Photos from Last months meeting...



**KineticElectrical®**  
smarter

**Sue Beston**  
Managing Director

p: (09) 238 9591  
m: 027 227 1436  
e: sue.beston@kinetic-electric.co.nz

**Best On Electrical Ltd**  
1/80 Adams Drive  
Pukekohe 2120  
New Zealand  
[www.kinetic-electric.co.nz](http://www.kinetic-electric.co.nz)



**PUKEKOHE TRAVEL**

**GAIL LITTIN** *Office Manager*  
*Master Cruise Consultant*

89 King Street, PO Box 313 Pukekohe, 2340  
Auckland South, New Zealand  
T +64 9 237 1049 M 027 458 6648 F +64 9 238 3613  
Email: [gail@pukekohe-travel.co.nz](mailto:gail@pukekohe-travel.co.nz)  
[www.pukekohetravel.co.nz](http://www.pukekohetravel.co.nz)

